

OPTICOM™

SMART MOBILITY



GLOBAL TRAFFIC
TECHNOLOGIES



Proven solutions solve critical traffic challenges

Urbanization, including suburbs and exurbs, are creating population booms in urban areas. As a result, automobile use has increased, and a variety of road users are competing for limited space. Cities must balance the needs and demands of general travel, transit, freight and emergency services to maintain safety and develop commerce.

GTT helps smart mobility managers guide the movement of people and goods in a safer, more efficient manner by giving them connectivity, control and connected vehicle applications. GTT works with municipal partners and third-party vendors to find better ways to help deliver municipal services through data-driven insights. This results in faster and safer emergency responses, more reliable and flexible transit systems, and complete control over how vehicles travel along the traffic grid.



Decrease response times by up to 25%*



Reduce intersection crashes by up to 70%*



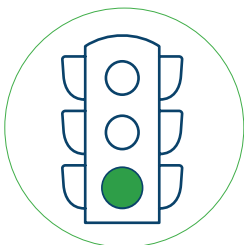
Increase first responder safety



Improve incident and patient outcomes



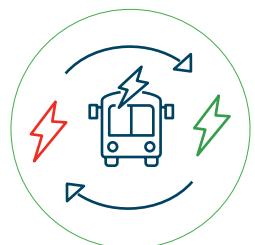
29% reduction in delays at traffic signals*



11% reduction of stops at red lights*



More predictability for riders



Less variability for EV recharging time

*U.S. DOT and GTT studies. Available upon request.

Future-proof platforms enable flexibility

From legacy infrared systems to software-based solutions, GTT's Opticom™ signal priority solutions allow for flexible deployments in mixed technology environments.



NONE

No V2X communication, dependent on driver and fixed signal timing



POINT-TO-POINT

Legacy point-to-point communications, including optical and sound



SEMI-INTEGRATED

Modern point-to-point communications with GPS locating and remote management



INTEGRATED

Hardware-lite solution leveraging municipal and vehicle infrastructure



SMART MOBILITY

Fully-integrated software solution leveraging IoT devices, third-party data and cloud technology

HOW THEY COMPARE

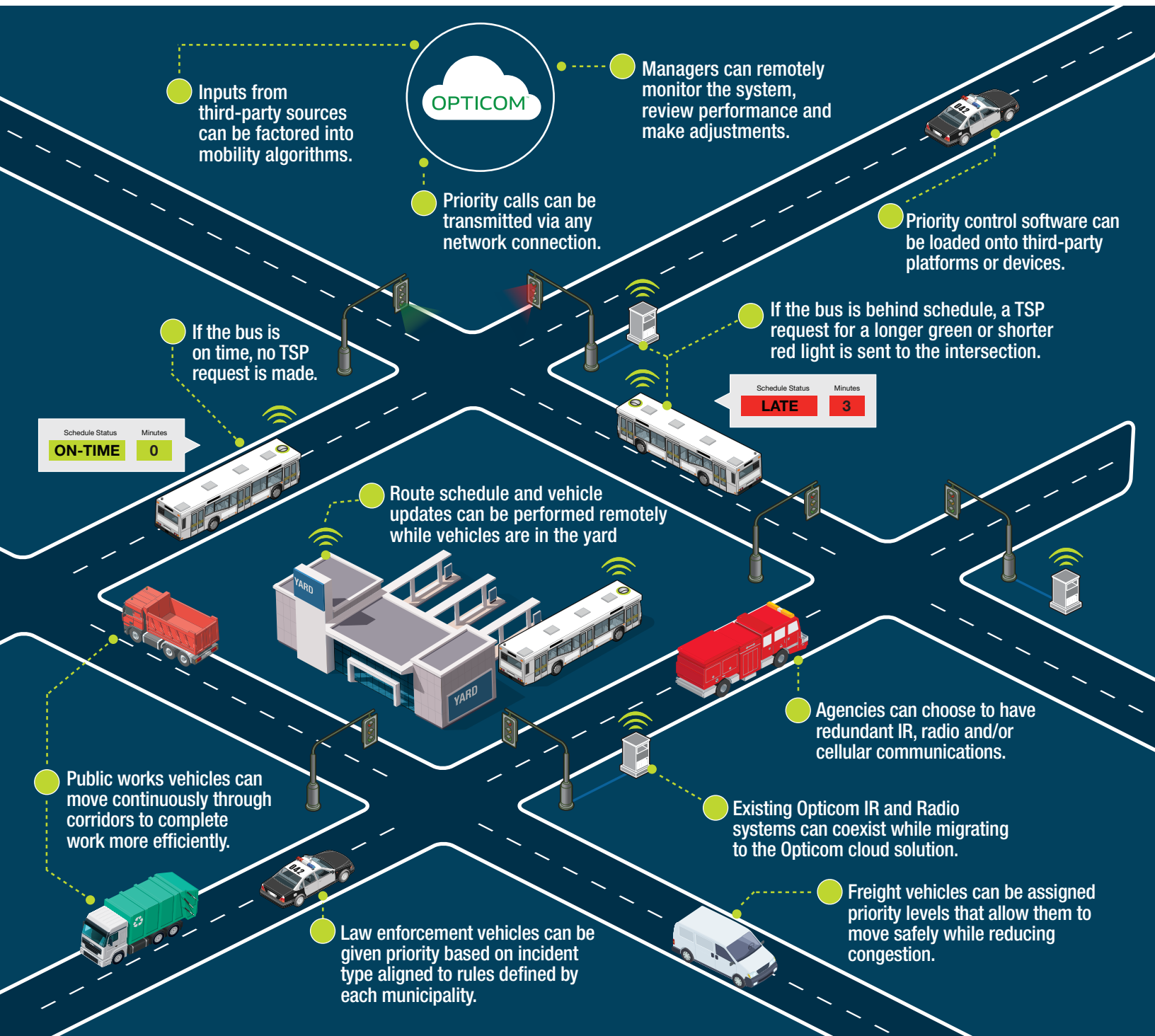
	IR	RADIO	CLOUD
Allows for priority requests, reducing delays and improving safety	●	●	●
Managed services available to keep system running optimally	●	●	●
Multimode operation for staggered upgrades and interoperability	●	●	●
Ability to transmit and receive without line-of-sight		●	●
Remote maintenance and monitoring available with network connectivity		●	●
Advanced conditional and relative priority capabilities		●	●
Software-only solutions available resulting in faster deployments			●
Powerful analytics to monitor, manage and maintain functionality			●
Browser-based user interface for easy vehicle and intersection insights			●
Open data architecture			●
Flexible installation options to ensure smooth integration with complex vehicle and wayside infrastructure			●

A clear path to mobility management

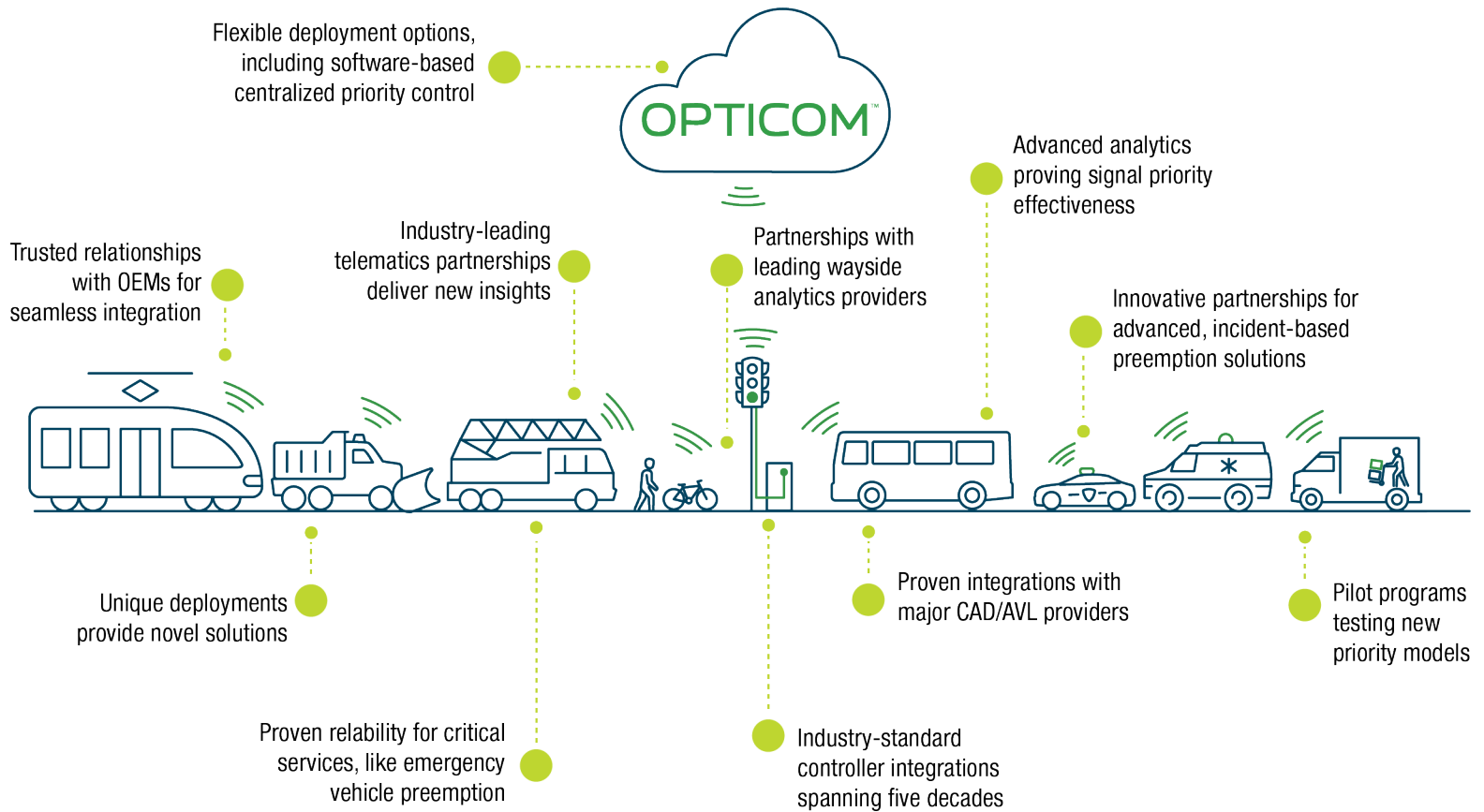
Opticom™ priority control provides a single, connected vehicle solution that empowers smart mobility managers to control how vehicles move throughout the traffic grid.

- **Public safety** vehicles preempt normal traffic light cycles to respond quickly and safely, but intersections quickly return to normal operation.
- **Transit** vehicles request priority from the traffic signal when they're late, allowing them to safely make up lost time without compromising traffic flow.
- **Public works** vehicles can be given priority so that streets can be cleared more quickly and with less fuel usage.
- **Freight** and other vehicles can be routed through priority corridors to create safer streets and less congestion.

Insights generated by the complete mobility platform enable managers to make informed decisions about timing and resource allocation.



Integrated solutions drive actionable insights



Smarter ways to save

Municipalities are seeking creative ways to procure essential technology solutions. With innovative options for purchasing Opticom, your agency can quickly realize savings. Both traditional (CapEx) and subscription options can include up-front and/or ongoing managed services.



- Full customer ownership
- Capital expense
- Customer manages maintenance
- Standard hardware warranty
- Highest technological risk



- Customer-owned hardware and software
- GTT monitors and maintains
- Regular system reports
- Break/fix services
- Help desk support



- Gold standard, all-in-one solution
- Most flexible deployment options
- GTT assumes technology risk
- Includes all hardware, software and services, in exchange for a predictable fee



Innovative solutions built on a legacy of leadership

GTT's Opticom solutions have been synonymous with traffic signal preemption and priority control for more than five decades, helping more than 5,000 agencies worldwide move public safety and transit vehicles through signalized intersections safely and efficiently.

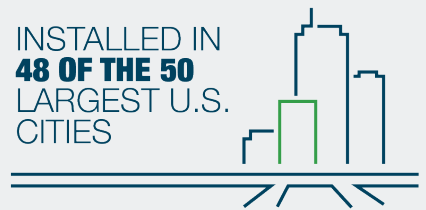
While Opticom has been known as the pioneer and "gold standard" of the industry since its creation, GTT has evolved its offerings significantly in recent years to take advantage of what's now possible from a smart mobility perspective.

Today, GTT's approach is to meet the customer where they are in their smart city journey. That includes providing everything from legacy hardware that turns lights green for emergency vehicles to connected, integrated telematics and mobility platforms that let smart mobility managers facilitate efficient movement of people and goods throughout a region. GTT's intent is to leverage previous infrastructure investments to architect a solution that scales as a customer's needs change.

GTT works collaboratively with transit, public safety, public works, traffic engineering, IT teams and other key leaders to create a seamless, adaptable traffic ecosystem specifically for your community.

GTT solves the most pressing traffic challenges for communities of all sizes; from towns of thousands to megacities of millions, in countries around the world. GTT is ready to help you, too.

SCAN TO LEARN MORE



5,000+
CUSTOMERS
WORLDWIDE



180,000+
CONNECTED VEHICLES
AND INTERSECTIONS



**WORLD-CLASS
CUSTOMER
SERVICE**



CONSISTENT TOP QUARTILE
NET PROMOTER SCORE®

Opticom and the GTT logo are trademarks of Global Traffic Technologies, LLC.
Used under license in Canada. Please recycle. Printed in USA.
© Global Traffic Technologies, LLC 2021. All rights reserved.

