

OPTICOM®

Emergency Vehicle Preemption (EVP)
for Law Enforcement



Opticom® helps improve officer safety and response times.

Police officers must act decisively at a moment's notice. Lives may hang in the balance, including their own. That's why law enforcement agencies choose Opticom® traffic signal priority control solutions. Our reliable, scalable systems help ensure safer, faster on-scene arrival — while maximizing resources and your investment.

REDUCE
INTERSECTION
CRASH
RATES



IMPROVE
RESPONSE TIMES
up to

25%*



OPTICOM® BENEFITS

**PREVENT
INJURIES**

AND
RELATED
COSTS



OFFER **QUICK
PAYBACK**
ON YOUR
INVESTMENT



**DECREASE
LIABILITY**

FOR CRASHES
WITH OTHER
MOTORISTS



*Independent studies available upon request

OPTICOM® SOLUTIONS



GLOBAL TRAFFIC TECHNOLOGIES



Choose the Opticom® technology that works best for your community:



Infrared Technology



GPS Technology



Multimode Technology



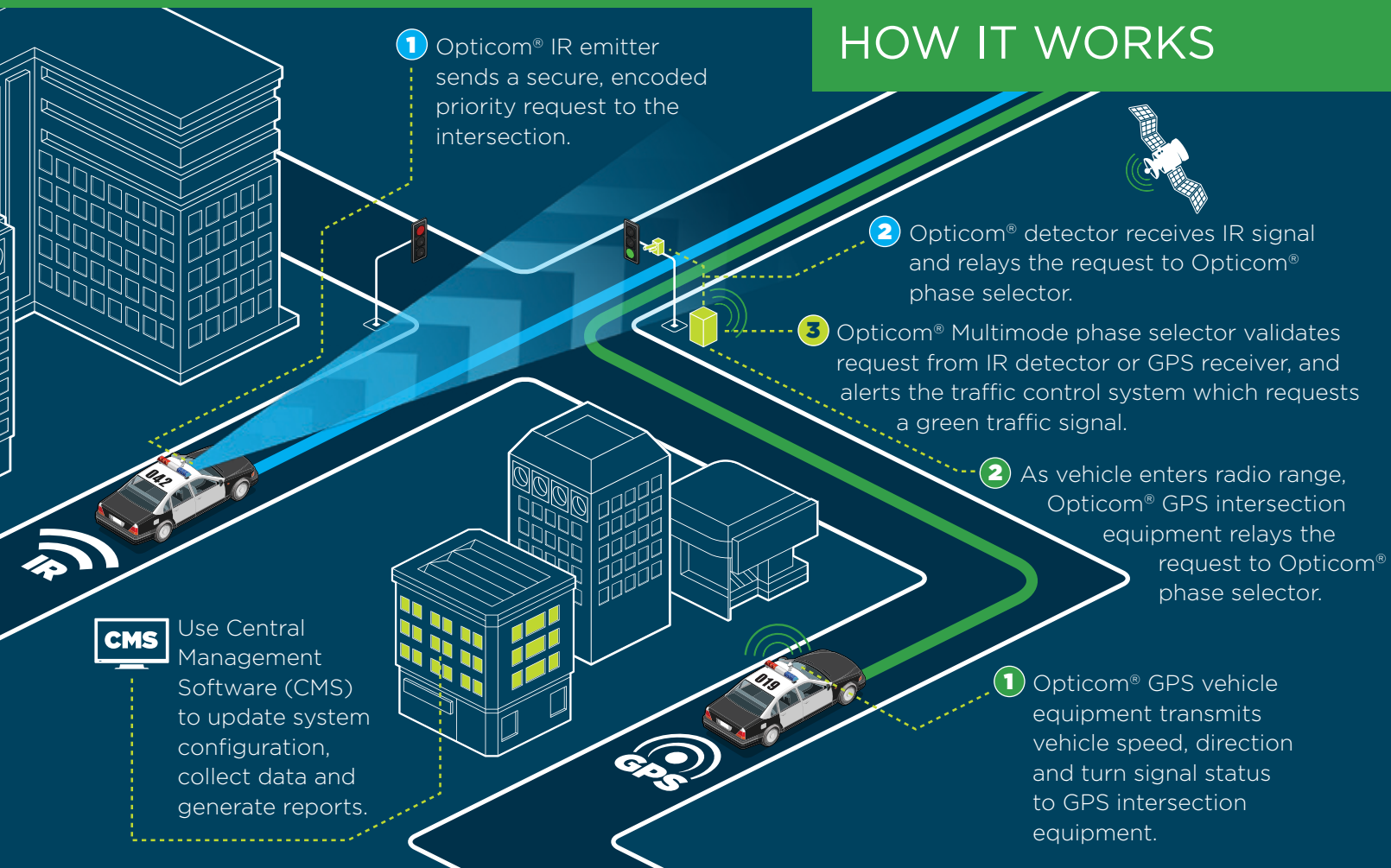
Central Management Software

Serve the community, protect your investment

Discover why GTT's installed base has grown to more than 70,000 intersections in nearly 3,000 cities worldwide. Our innovative technologies and expert services improve how you serve your community. Join other public service agencies — including fire, EMS, transit and public works — and use Opticom® for more effective mutual aid strategies and to resolve critical traffic management challenges cost-effectively.

Choose either infrared (IR) or GPS technology — or use a combination of both via our Multimode solution. You can also manage your entire traffic signal priority control system remotely in real-time using Opticom® Central Management Software (CMS).

HOW IT WORKS



GLOBAL TRAFFIC TECHNOLOGIES

Global Traffic Technologies, LLC
7800 Third Street N
St. Paul, MN 55128-5441
1-800-258-4610
651-789-7333
www.gtt.com

Global Traffic Technologies Canada, Inc.
157 Adelaide Street West
Suite 448
Toronto, ON M5H 4E7
Canada
1-800-258-4610

For more information:

Visit: www.gtt.com

Call: **800.258.4610**